

1-080 Compression Quarter-Turn 21.6

Tool operable, vibration resistant

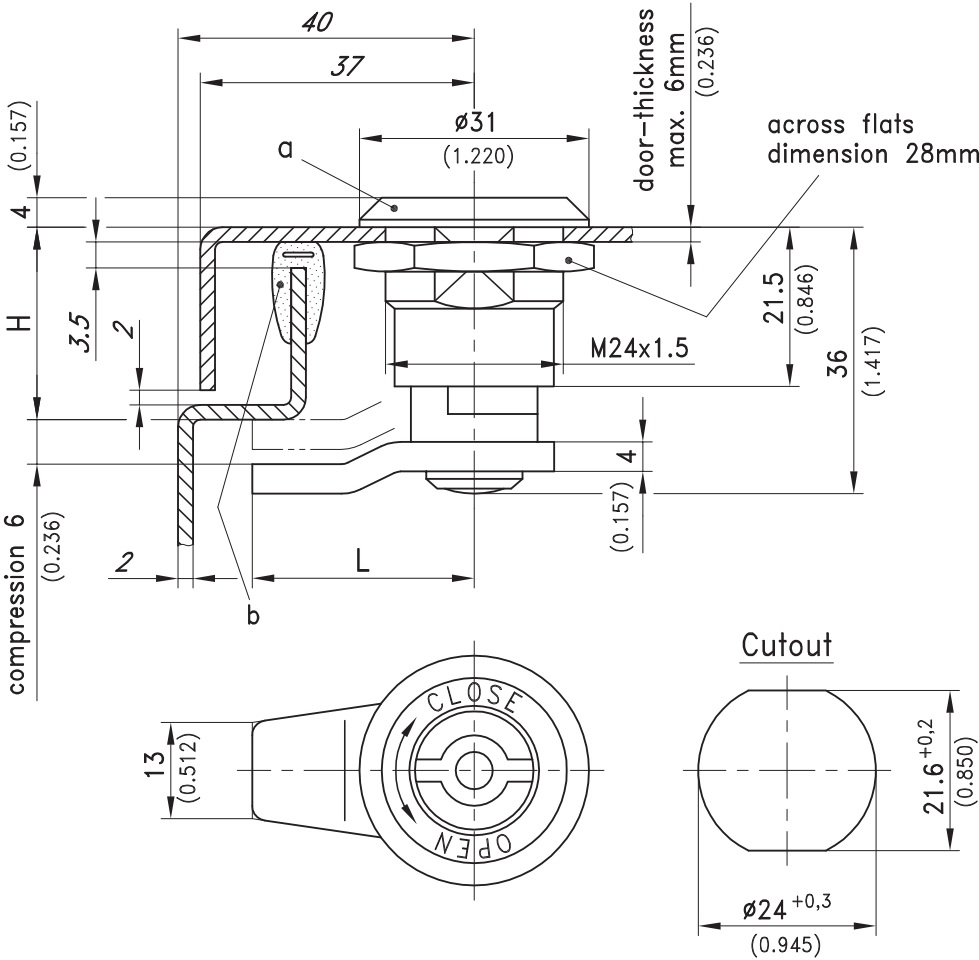
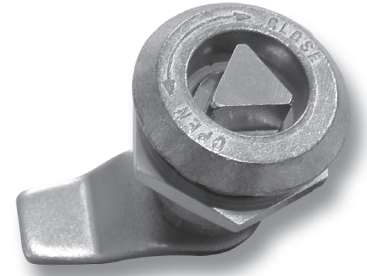


Product Notes:

- Two 90° rotations first secure door closed and then apply compression
- To latch - turn clockwise
To unlatch - turn counter clockwise
- Turning the insert 90° places cam in closed position. Continuing rotation (up to 5x) pulls cam for compression
- Provides up to 6mm compression
- Vibration resistant

Material:

- **Housing:** Zinc Die, Zinc Plated
- **Insert:** Brass, Nickel Plated
- **Cams:** Stainless Steel
- **Nut:** Steel, Zinc Plated



a) Clamping Quarter-Turn	H 18 / L 30	H 21.5 / L 30	H 27 / L 30	H 20 / L 45	H 21.5 / L 45	See Page
Insert						
Square 7mm	248-9001.35	248-9009.35*	248-9017.35	248-9025.35*	248-9033.35	
Square 8mm	248-9002.35*	248-9010.35*	248-9018.35	248-9026.35*	248-9034.35	
Triangular 7mm	248-9003.35	248-9011.35	248-9019.35*	248-9027.35*	248-9035.35	
Triangular 8mm	248-9004.35*	248-9012.35*	248-9020.35	248-9028.35*	248-9036.35*	
Triangular 10mm	248-9005.35*	248-9013.35*	248-9021.35*	248-9029.35*	248-9037.35*	
Double bit 3mm pin	248-9006.35	248-9014.35*	248-9022.35*	248-9030.35*	248-9038.35	
Double bit 5mm pin	248-9007.35*	248-9015.35*	248-9023.35	248-9031.35*	248-9039.35*	
Slotted 2x4mm deep	248-9008.35*	248-9016.35	248-9024.35	248-9032.35*	248-9040.35*	
b) Clip-on gasket	209-0302.00	209-0302.00	209-0302.00	209-0302.00	209-0302.00	05.10

* Price and delivery time on request